



APRIL 18, 2025 12 PM
MST

**SELLING YEARLING & 18-MONTH-OLD RED ANGUS BULLS
& COMMERCIAL REPLACEMENT HEIFERS**



When Profit becomes Priority Look to Red Western Genetics!



Friday, April 18, 2025

12:00 pm MT

Crawford Livestock, Crawford, NE

SALE DAY TELEPHONES

Crawford Livestock1-866-665-2220 or 308-665-2220
Jeff Grill..... 605-890-1477
Brad Grill..... 605-891-3041

SALE HOSTS

Jeff & Diana Grill, Grill Cattle Co..... 605-890-1477
Brad & Trixie Grill, B Lazy T Ranch..... 605-673-5518

AUCTIONEER: Matt Lowery308-750-6119

SALE REPRESENTATIVES

Scott Dirk, Tri-State Livestock News 605-380-6024
Ryan Casteel, Cattle Business Weekly..... 605-423-6000
Jeff Kapperman, Midwest Messenger 605-940-5104
Cory Peters, Red Angus Commercial Marketing Specialist
..... 402-418-2351

BUYER REPRESENTATIVE:

Dave Koupal 605-390-0625

MAIL & TELEPHONE ORDER BIDS

Bids will be handled in strict confidence by any of the publication representatives or Red Western representatives.

HEALTH

All bulls are guaranteed breeders and assured healthy on sale day. They have all passed a semen evaluation by a certified veterinarian.

INSURANCE

Bull Mortality and Infertility Insurance will be available sale day with Martin-Trudeau Insurance.

LIABILITY

All persons who attend the sale do so at their own risk. The hosts assume no liability, legal or otherwise, for any accidents which may occur.

DELIVERY

Pick up your bulls from Crawford Livestock by Sunday evening and receive \$50 per bull discount. We will deliver the bulls free of charge to central locations in Nebraska, South Dakota and Wyoming. Anything outside of this area will be at least cost possible. Please let the office staff know at settlement time what you will be doing with your bulls.

CALVING EASE RECOMMENDATIONS:

- ★★★ Recommended for heifers and cows
- ★★ Recommended for large heifers and cows
- ★ Recommended for cows only

**Current weights and scrotal size
will be available sale day.**



**Video of the bulls available
at dvauction.com**

**Sale will be broadcast live
on dvauction.com**

**If you are not able to attend the sale, please be sure to
register at DVAuction at least 2 days ahead of the sale.**



❧ CATTLEMEN ❧

For over 20 years, Red Western genetics have focused on the fundamentals that keep a cow herd thriving. We constantly try to improve on such traits as: udders, feet, fertility and performance to name a few. We feel very comfortable that our cow base will compete with any herd in these disciplines.

There have also been some exciting advancements in marketing that should add premiums to your Red Western sired calves. Give the marketing team at the Red Angus Association a call or visit with us and we can help. We also receive many calls looking for replacement females. Give us a call if you are looking to move some heifers.



Brad, Trixie, Braden & Brylee Grill
605-673-5518



Jeff, Diana, Chance, Taylor & Cade Grill
605-890-1477

REFERENCE SIRES



GRILL ARDMORE 9009G

03-07-2019

Cat 1A-100% AR

Reg#: 4398147

RED SIX MILE AVIATOR 217P

RED SIX MILE SAKIC 832S

RED SIX MILE SIERA 257P

CITATION 138

GT CITA 4060

JMDF MISS LANA

Data	Ratio
Act BW	85
Adj. WW	848
Adj. YW	1366
SC:	

EPD	
Marb	0.11
YG	0.08
CW	13
REA	-0.15
FAT	0.00

	ProS	HB	GM	CED	BW	WW	YW	Milk	ME	HPG	CEM	Stay
EPDs	36	27	9	11	0	70	105	25	3	12	6	11



LEM WORLDWIDE 1001 ET

01-20-2021

Cat 1A-100% AR

Reg#: 4493743

SLGN WIDELOAD 920W

PELTON WIDELOAD 78B

PELTON MISS JAYLA 0508S

RREDS SENECA 731C

LEM MS SENECA 902 ET

LEM REDEMPTION 616 ET

Data	Ratio
Act BW	74
Adj. WW	726
Adj. YW	1366
SC:	

EPD	
Marb	0.40
YG	0.09
CW	31
REA	0.19
FAT	0.02

	ProS	HB	GM	CED	BW	WW	YW	Milk	ME	HPG	CEM	Stay
EPDs	108	47	61	15	-1.9	72	122	27	8	10	7	16



RREDS BLUE PRINT H001

01-09-2020

Cat 1A-100% AR

Reg#: 4287851

LMAN KING ROB 8621

GLACIER CHATEAU 744

GLACIER REBALA

RREDS SENECA 731C

RREDS PRIMROSE F835

STRA PRIMROSE 530

Data	Ratio
Act BW	67
Adj. WW	770
Adj. YW	1320
SC:	

EPD	
Marb	0.02
YG	-0.05
CW	19
REA	0.59
FAT	0.04

	ProS	HB	GM	CED	BW	WW	YW	Milk	ME	HPG	CEM	Stay
EPDs	93	75	18	16	-5.5	58	86	25	-12	10	10	15



B LAZY T 805 D012 H054

02-23-2020

Cat 1A-100% AR

Reg#: 4274045

9 MILE FRANCHISE 6305

PIE FRANCHISE 805

PIE CHERI 627

BROWN JYJ REDEMPTION Y1334

B LAZY T Y065 176A D012

B LAZY T RANCH COW Y065

Data	Ratio
Act BW	88
Adj. WW	688
Adj. YW	1137
SC:	

EPD	
Marb	0.69
YG	0.08
CW	34
REA	0.25
FAT	0.02

	ProS	HB	GM	CED	BW	WW	YW	Milk	ME	HPG	CEM	Stay
EPDs	140	57	83	11	-1.7	71	127	30	15	12	7	17

REFERENCE SIRES



DUFF SMASH 2145

01-02-2021

Cat 1A-100% AR

Reg#: 4575619

ROJAS RIOJA 6052

DUFF RED BLOOD 18114

DUFF JUANADA 927K 15124

RED LAZY MC CC DETOUR 2W

DUFF SMASH 117S 18402

RED EGGEN SMASH MISS 117S

Data	Ratio
Act BW	69
Adj. WW	1029
Adj. YW	1318
SC:	

EPD	
Marb	0.17
YG	0.05
CW	12
REA	0.10
FAT	0.03

	ProS	HB	GM	CED	BW	WW	YW	Milk	ME	HPG	CEM	Stay
EPDs	34	30	4	14	-1.5	69	99	31	-4	9	6	11



RREDS SENECA 731C

03-01-2015

Cat 1A-100% AR

Reg#: 3491307

BIEBER ROOSEVELT W384

BIEBER ROLLIN DEEP Y118

BIEBER TILLY 399W

BECKTON EPIC R397 K

RREDS ASTER 309A

MLK CRK ASTER 175

Data	Ratio
Act BW	74
Adj. WW	974
Adj. YW	1448
SC:	

EPD	
Marb	0.06
YG	0.19
CW	35
REA	0.38
FAT	0.08

	ProS	HB	GM	CED	BW	WW	YW	Milk	ME	HPG	CEM	Stay
EPDs	69	56	13	11	-1.9	78	122	19	2	6	9	16



B LAZY T 361H C005 K070

03-22-2022

Cat 1A-100% AR

Reg#: 4652667

RED U2 HEAD GAMES 330E

RED SUNBERRY HEAD GAMES 361H

RED U2 REBELLO 194F

FEDDES BIG SKY R9

B LAZY T MISS BS C005

B LAZY T WILLIE A031

Data	Ratio
Act BW	94
Adj. WW	712
Adj. YW	1161
SC:	

	EPD
Marb	0.37
YG	0.02
CW	33
REA	0.30
FAT	0.01

	ProS	HB	GM	CED	BW	WW	YW	Milk	ME	HPG	CEM	Stay
EPDs	80	28	52	9	1.8	77	122	23	12	12	2	14



RED OLE RED BLOOD 900J

05-24-2021

Cat 1A-100% AR

Reg#: 4874788

ROJAS RIOJA 6052

DUFF RED BLOOD 18114

DUFF JUANADA 927K 15124

RED U-2 FOREIGNER 413B

RED OLE LANA 138F

MUSHRUSH JA LANA U086

Data	Ratio
Act BW	
Adj. WW	
Adj. YW	
SC:	

EPD	
Marb	0.32
YG	-0.05
CW	6
REA	0.11
FAT	-0.00

	ProS	HB	GM	CED	BW	WW	YW	Milk	ME	HPG	CEM	Stay
EPDs	79	65	14	15	-2.7	70	97	32	-7	13	6	15

View the Auction Live! Bid Online... you're ringside right at your desk!

Buying online is as easy as 1, 2, 3...

1. Create an account at www.DVAuction.com under the "Register" tab
2. Apply for bidding approval by clicking on the "details" tab at least 24 hours prior to the auction — a DV representative will notify you once you have been approved.
3. Tune in for the sale to make your purchases!

High Speed internet is required for successful bidding—be sure to check the lag-time monitor in the top left corner to ensure real-time broadcasts.

Proxy-bidding — if you can't make time to watch the sale, register a proxy bid and let our system represent your bid while you're away. Look for the "proxy bid" tab on the auction listing, and fill in your maximum bids. We'll handle the rest!

For General Questions Please contact Our Office:

402-316-5460 or support@dvauction.com



DVAuction
Broadcasting Real-Time Auctions

REFERENCE SIRES



PIE FRANCHISE 805

01-18-2018

Cat 1A-100% AR

Reg#: 4046526

SPUR FRANCHISE OF GARTON

9 MILE FRANCHISE 6305

C-BAR ABIGRACE Y11

ANDRAS FUSION R236

PIE CHERI 627

PIE CHERI 4038

Data	Ratio
Act BW	66
Adj. WW	649
Adj. YW	1267
SC:	

EPD	
Marb	0.83
YG	0.09
CW	44
REA	0.44
FAT	0.03

	ProS	HB	GM	CED	BW	WW	YW	Milk	ME	HPG	CEM	Stay
EPDs	158	58	100	14	-2.2	77	140	32	13	12	9	15



NIO RED RIVER 1245

09-03-2021

Cat 1A-100% AR

Reg#: 4582345

RED U-2 RIFF 1213C

EGL GCC RED EAGLE E7194

TJS SARABEL A174

RED U-2 RECKONING 149A

NIO MEG 8047

RED BLAIR'S MEG 12D

Data	Ratio
Act BW	81
Adj. WW	751
Adj. YW	102
SC:	

EPD	
Marb	0.27
YG	0.00
CW	30
REA	0.31
FAT	0.01

	ProS	HB	GM	CED	BW	WW	YW	Milk	ME	HPG	CEM	Stay
EPDs	72	37	35	8	1.9	74	107	22	1	13	4	13



REDHILL T189 MEDAL 176A

09-08-2013

Cat 1A-100% AR

Reg#: 1670037

BUF CRK NICE'N EASY T189

BUF CRK NICE'N EASY T189

BUF CRK REDPRIDE P154

RED HILL 17P JULIAN 126T

REDHILL 126T 287 182W

SHADY'S MS MARIAS 287

Data	Ratio
Act BW	77
Adj. WW	519
Adj. YW	941
SC:	

EPD	
Marb	0.61
YG	0.26
CW	18
REA	-0.12
FAT	0.07

	ProS	HB	GM	CED	BW	WW	YW	Milk	ME	HPG	CEM	Stay
EPDs	174	119	55	12	-3.8	66	100	18	-2	25	8	19



RED RAINBOW METRIC 106K

03-03-2022

Cat 1A-100% AR

Reg#: 4946536

RED U2 DOMINION

RED LWNBRG SLOWBURN 102H

RED U2 FAVORITE 275F

RED LFE TURBULENCE 3082Y

RED RAINBOW DOLL 46B

RED RAINBOW DOLL 17X

Data	Ratio
Act BW	
Adj. WW	
Adj. YW	
SC:	

EPD	
Marb	0.20
YG	-0.05
CW	27
REA	0.48
FAT	0.01

	ProS	HB	GM	CED	BW	WW	YW	Milk	ME	HPG	CEM	Stay
EPDs	52	13	39	7	1.9	76	121	31	6	10	4	11



1

2/27/23

Reg#: 4920552

1A-100% AR

Calving Ease ★★

GLACIER CHATEAU 744

RREDS BLUE PRINT H001

RREDS PRIMROSE F835

WEBR RURAL ROUTE 561

GRILL MS MADDY 1025J

GRILL MADDY 9B

	Data	Ratio
Act BW	70	
Adj. WW	805	
Adj. YW		
SC:		
Carcass		EPD
Marb	0.19	
YG	0.03	
CW	18	
REA	0.27	
FAT	0.03	

	ProS	HB	GM	CED	BW	WW	YW	Milk	ME	HPG	CEM	Stay
EPDs	78	51	27	14	-3.6	60	92	25	-1	10	8	14

Combines several of the most important traits an Angus bull can offer!

His sure-fire calving ease, deep, soggy frame, super feet, all to sire elite uddered females makes him very unique. He had a 70 lb. BW and weaned at 779 lbs. (not bad for a heifer bull). . His ability to sire elite uddered females that breed back consistently might be his best attribute.

Grid Line's dam might be as good of a young cow we've had around here. She has an outstanding udder, great feet, and bred back for her second calf within 375 days.

We liked his potential so well, we used him on a set of purebred replacement heifers.

His stats are: 95% breed up and to date, between 70-75 lbs on all his calves.

2

3/6/23

Reg#: 4878952

1A-100% AR

Calving Ease ★★

RES PIE SPECIALIST 430

COCKBURN ARSENAL 8001

COCKBURN CORA 254Z

XO CROWFOOT 0102X

GOLDEN SUNSET PIEBIRD 3C

RED OLE PIEBIRD 154X

	Data	Ratio
Act BW	65	
Adj. WW	527	
Adj. YW		
SC:		
Carcass		EPD
Marb		
YG		
CW		
REA		
FAT		

	ProS	HB	GM	CED	BW	WW	YW	Milk	ME	HPG	CEM	Stay
EPDs	45		15	-3.9	48	76	25	-1	12	8	13	

A great 2 yr old heifer bull. Used on a set of replacement heifers for his ability to sire calving ease and deep easy fleshing progeny. This bull will breed a few more females because of his age. He comes from a superior female line that will add desirable replacements to your herd, keep them all.



GIVING THE FINAL "SAY" ON SORTING THE KEEPERS

Last of the Ardmore sons to sell! (lots 3-12)



3

GRILL ARDMORE 3102L

9/5/23

Reg#: 4985393

1A-100% AR

Calving Ease ★★

RED SIX MILE SAKIC 832S

GRILL ARDMORE 9009G

GT CITA 4060

REISIG CA PRIORITY 536

GRILL LARKABA 7112

TJS LARKABA X0264

	Data	Ratio
Act BW	74	
Adj. WW	712	101
Adj. YW		
SC:		
Carcass	EPD	
Marb	0.26	
YG	0.06	
CW	25	
REA	0.05	
FAT	0	

	ProS	HB	GM	CED	BW	WW	YW	Milk	ME	HPG	CEM	Stay
EPDs	88	43	45	11	-0.4	67	112	24	5	12	6	14

One of my favorite Ardmore sons throughout the year. His fault free dam will bring some out cross genetics from the Black Angus priority lines. Udder and feet should be super.

4

GRILL ARDMORE 3103L

9/6/23

Reg#: 4985401

1A-100% AR

Calving Ease ★★

RED SIX MILE SAKIC 832S

GRILL ARDMORE 9009G

GT CITA 4060

B LAZY T RANCH BULL Z003

GRILL VICKY 12B

BT ANASCO R027

	Data	Ratio
Act BW	75	
Adj. WW	690	98
Adj. YW		
SC:		
Carcass	EPD	
Marb	0.17	
YG	0.05	
CW	12	
REA	-0.05	
FAT	0.01	

	ProS	HB	GM	CED	BW	WW	YW	Milk	ME	HPG	CEM	Stay
EPDs	55	35	19	12	-0.3	64	98	25	3	9	6	13

This Ardmore son is again dark red and full of muscle. His dam, 12B, is a product of two powerful yet moderate and maternal bloodlines. 3103 progeny should make exceptional, strong topped feeder cattle.

5

GRILL ARDMORE 3105L

9/10/23

Reg#: 4985405

1A-100% AR

Calving Ease ★★

RED SIX MILE SAKIC 832S

GRILL ARDMORE 9009G

GT CITA 4060

B LAZY T RANCH BULL Z003

GRILL LILY 25B

GRILL JAN 8016

	Data	Ratio
Act BW	71	
Adj. WW	705	100
Adj. YW		
SC:		
Carcass	EPD	
Marb	0.15	
YG	0.05	
CW	14	
REA	-0.05	
FAT	0	

	ProS	HB	GM	CED	BW	WW	YW	Milk	ME	HPG	CEM	Stay
EPDs	52	33	19	11	0.3	65	101	26	3	10	6	13

One of the heaviest muscled bulls in the Ardmore lineup. His dam goes back to two high selling bulls in past Red Western sales. The females in this pedigree will prove to be his strength.

6

GRILL ARDMORE 3100L

9/2/23

Reg#: 4985375

1A-100% AR

Calving Ease ★★

RED SIX MILE SAKIC 832S

GRILL ARDMORE 9009G

GT CITA 4060

GRILL BARNO 4053

GRILL MS BARNO 7017

PLATEAU LARKABA P82

	Data	Ratio
Act BW	75	
Adj. WW	685	97
Adj. YW		
SC:		
Carcass	EPD	
Marb	0.22	
YG	0.09	
CW	14	
REA	-0.15	
FAT	0.01	

	ProS	HB	GM	CED	BW	WW	YW	Milk	ME	HPG	CEM	Stay
EPDs	65	41	24	10	0.6	63	96	25	2	11	5	14

Dark red Ardmore son out of a great uddered cow that shows the longevity that we have sought to implement in our cow herd. Our cows have been developed to have great udders and feet and rebred in tough conditions. This mating should exemplify that.



GRILL ARDMORE 3101L

9/3/23

Reg#: 4985379

1A-100% AR

Calving Ease ★★

	Data	Ratio
Act BW	73	
Adj. WW	685	97
Adj. YW		
SC:		
Carcass	EPD	
Marb	0.18	
YG	0.06	
CW	10	
REA	-0.13	
FAT	0.01	

RED SIX MILE SAKIC 8325

GRILL ARDMORE 9009G

GT CITA 4060

LORENZEN CATALYST 6454

JEFFRIES MS KYLA X728

LSF JLJ KYLA S439

	ProS	HB	GM	CED	BW	WW	YW	Milk	ME	HPG	CEM	Stay
EPDs	66	52	14	11	-0.4	64	97	25	0	11	6	15

These Ardmore sons have continued to show strong muscle development that is very noticeable in our commercial customers' calf crops. They all show great development from babies on. You'll find longevity in the progeny as his dam produced until 14 yrs of age.



GRILL ARDMORE 3110L

9/25/23

Reg#: 4985397

1A-100% AR

Calving Ease ★★

	Data	Ratio
Act BW	70	
Adj. WW	699	99
Adj. YW		
SC:		
Carcass	EPD	
Marb	0.15	
YG	0	
CW	17	
REA	0.12	
FAT	0	

RED SIX MILE SAKIC 8325

GRILL ARDMORE 9009G

GT CITA 4060

RED U-2 RIFF 1213C

GRILL LARKABA 7104

TJS STAR FLOWER U8122

	ProS	HB	GM	CED	BW	WW	YW	Milk	ME	HPG	CEM	Stay
EPDs	62	40	22	11	0.3	70	107	22	7	11	5	15

Dark red Ardmore son with a Canadian outcross dam. This mating should produce growth, great udders and feet. The dam is a powerful yet moderate overachiever with a 102 MPPA.



GRILL ARDMORE 3108L

9/16/23

Reg#: 4985395

1A-100% AR

Calving Ease ★★

	Data	Ratio
Act BW	72	
Adj. WW	710	101
Adj. YW		
SC:		
Carcass	EPD	
Marb	0.25	
YG	0.01	
CW	19	
REA	0.1	
FAT	0	

RED SIX MILE SAKIC 8325

GRILL ARDMORE 9009G

GT CITA 4060

5L BLOCKADE 2218-308

GRILL SAMARIA 7111

TJS SAMARIA X0277

	ProS	HB	GM	CED	BW	WW	YW	Milk	ME	HPG	CEM	Stay
EPDs	58	32	26	11	-0.6	70	105	23	3	9	4	14

Dark red, growth, exceptional females. The Ardmore progeny will make you sound like a broken record. 3108's dam is a super cow by 5L Blockade with a great udder and a 102 MPPA. This mating should produce awesome replacement heifers.



GRILL ARDMORE 3111L

9/27/23

Reg#: 4985383

1A-100% AR

Calving Ease ★★

	Data	Ratio
Act BW	76	
Adj. WW	718	102
Adj. YW		
SC:		
Carcass	EPD	
Marb	0.15	
YG	0.05	
CW	12	
REA	-0.09	
FAT	0	

RED SIX MILE SAKIC 8325

GRILL ARDMORE 9009G

GT CITA 4060

GRILL FLASHBACK 5004

GRILL MS FB 18Y

GRILL MS VACATION 5014

	ProS	HB	GM	CED	BW	WW	YW	Milk	ME	HPG	CEM	Stay
EPDs	44	26	17	9	1	62	96	26	3	11	5	12

Dark red and lots of muscle. These Ardmore sons will give your calf crop a whole new direction when it comes to growth and maternal traits. 3111's dam produced our high selling bull in a past sale, going to Montana.

Lifetimes of Experience WE KNOW AG



Justine R
AG Lender

605.858.6408

Dave K
AG Manager

605.858.6211



Connect with us bhfcu.com/Ag

Equipment | Livestock | Real Estate | Lines-Of-Credit

LOT 11'S DAM
GRILL BREE 3014A
 (PICTURED IN HER NORMAL RIG ON WINTER GRASS)



LOT 11'S GRAND DAM
CGRA MISS BRIARBERRY 924
 (PICTURED AT 10 YRS OLD)

11

GRILL ARDMORE 3113L

10/2/23

Reg#: 4985407

1A-100% AR

Calving Ease ★★

RED SIX MILE SAKIC 832S

GRILL ARDMORE 9009G

GT CITA 4060

BECKTON EPIC R397 K

GRILL BREE 3014A

CGRA MISS BRIARBERRY 924

	Data	Ratio
Act BW	69	
Adj. WW	720	102
Adj. YW		
SC:		
Carcass	EPD	
Marb	0.2	
YG	0.11	
CW	22	
REA	-0.02	
FAT	0.02	

	ProS	HB	GM	CED	BW	WW	YW	Milk	ME	HPG	CEM	Stay
EPDs	70	39	32	11	0	70	111	25	6	13	6	13

An Ardmore son that many visitors have commented on. This bull will have all the muscle and growth to produce a set of calves that can compete on any level. His dam, 3014A, has been a long time donor for Grill Cattle Co. This bull has an impressive EPD profile along with physical attributes that allow him to rise to the top.

12

GRILL ARDMORE 3114L

10/8/23

Reg#: 4985409

1A-100% AR

Calving Ease ★★

RED SIX MILE SAKIC 832S

GRILL ARDMORE 9009G

GT CITA 4060

ANDRAS NEW DIRECTION R240

GRILL CLAIRE 8024F

BT Y057

	Data	Ratio
Act BW	73	
Adj. WW	703	100
Adj. YW		
SC:		
Carcass	EPD	
Marb	0.28	
YG	0.1	
CW	15	
REA	-0.12	
FAT	0.01	

	ProS	HB	GM	CED	BW	WW	YW	Milk	ME	HPG	CEM	Stay
EPDs	70	41	29	11	-0.5	65	101	22	2	13	5	13

This dark red Ardmore son again shows great muscle and growth. His dam, 8024, is one of the best cows in the herd out of the great female maker, New Direction. The steer calves will be sought after and the heifer calves will be replacement quality.

13

B LAZY T 805 F026 M001

1/29/24

Reg#: 4921424

1A-100% AR

Calving Ease ★★

9 MILE FRANCHISE 6305

PIE FRANCHISE 805

PIE CHERI 627

C-T NEW DIRECTION 6044

B LAZY T MISS 6044 F026

B LAZY T RANCH W078

	Data	Ratio
Act BW	79	
Adj. WW	618	100
Adj. YW		
SC:		
Carcass	EPD	
Marb	0.63	
YG	0.12	
CW	31	
REA	0.13	
FAT	0.03	

	ProS	HB	GM	CED	BW	WW	YW	Milk	ME	HPG	CEM	Stay
EPDs	131	57	75	15	-3.1	65	113	29	5	10	9	15

Dark red calving ease bull with plenty of growth with an actual weaning weight of 645 lbs. Female makers on both sides of the pedigree.



LOT 13'S DAM - B LAZY T MISS 6044 F026



B LAZY T SM C037 M011

2/6/24

1A-100% AR

Reg#: 4921400

Calving Ease ★

DUFF RED BLOOD 18114

DUFF SMASH 2145

DUFF SMASH 117S 18402

5L ALPINE 4899-593Z

B LAZY T MISS AP C037

B LAZY T RANCH COW X081

	Data	Ratio
Act BW	89	
Adj. WW	666	106
Adj. YW		
SC:		
Carcass		EPD
Marb	0.24	
YG	0.05	
CW	17	
REA	0.09	
FAT	0.01	

	ProS	HB	GM	CED	BW	WW	YW	Milk	ME	HPG	CEM	Stay
EPDs	60	40	20	11	0.9	75	111	27	2	9	5	14

This bull will add pounds, he has been impressive since he was a week old calf. Out cross genetics out of Duff Smash which commanded \$75,000 for 1/2 semen interest. 10 year old dam that has a 104 MPPA on 8 calves while maintaining a 363 day calving interval and her progeny have an avg weaning ratio of 105 and yearling ratio of 106.



BAG M022

2/8/24

1A-100% AR

Reg#: 5031119

Calving Ease ★

DUFF RED BLOOD 18114

DUFF SMASH 2145

DUFF SMASH 117S 18402

B LAZY T HEAVY MEDAL D043

B LAZY T MISS D043 F043

RED BLAIR 'S QUEEN 82C

	Data	Ratio
Act BW	86	
Adj. WW	694	
Adj. YW		
SC:		
Carcass		EPD
Marb	0.27	
YG	0.04	
CW	18	
REA	0.17	
FAT	0.02	

	ProS	HB	GM	CED	BW	WW	YW	Milk	ME	HPG	CEM	Stay
EPDs	75	49	25	11	0.1	74	112	28	2	12	5	14

ET calf out of one of our top cows. Unfortunately we lost her before we got a DNA sample so are unable to register these calves. More frame, 700 lb weaning weight and big growth numbers.



WESTERN SD CUSTOMER UTILIZING RED WESTERN GENETICS AS A BASE TO PRODUCE SOME OF THE MOST SOUGHT AFTER CHAROLAIS CALVES TO EVER HIT THE MARKET.



B LAZY T SM D012 M026

2/10/24

1A-100% AR

Reg#: 4921404

Calving Ease ★

DUFF RED BLOOD 18114

DUFF SMASH 2145

DUFF SMASH 117S 18402

BROWN JYJ REDEMPTION Y1334

B LAZY T Y065 176A D012

B LAZY T RANCH COW Y065

	Data	Ratio
Act BW	91	
Adj. WW	597	95
Adj. YW		
SC:		
Carcass		EPD
Marb	0.36	
YG	0.05	
CW	10	
REA	0	
FAT	0.02	

	ProS	HB	GM	CED	BW	WW	YW	Milk	ME	HPG	CEM	Stay
EPDs	67	42	25	10	-0.2	66	100	29	2	11	5	14

Smash son out of one of the better cows on the ranch with a 104 MPPA and has progeny records of avg. ww ratio 104 and avg. yw ratio of 102. This guy got hurt on summer pasture and spent very little time keeping up with his dam for about a month which really set him behind. He will have plenty of performance and make some impressive replacements.



BAG M032

2/15/24

1A-100% AR

Reg#: 5031123

Calving Ease ★

DUFF RED BLOOD 18114

DUFF SMASH 2145

DUFF SMASH 117S 18402

B LAZY T HEAVY MEDAL D043

B LAZY T MISS D043 F043

RED BLAIR 'S QUEEN 82C

	Data	Ratio
Act BW	92	
Adj. WW	668	
Adj. YW		
SC:		
Carcass		EPD
Marb	0.27	
YG	0.04	
CW	18	
REA	0.17	
FAT	0.02	

	ProS	HB	GM	CED	BW	WW	YW	Milk	ME	HPG	CEM	Stay
EPDs	75	49	25	11	0.1	74	112	28	2	12	5	14

ET calf out of one of our top cows. Unfortunately we lost her before we got a DNA sample so are unable to register these calves. More frame, more weaning weight and big growth numbers.



18

B LAZY T BP K021 M013

2/6/24

Reg#: 4921490

1A-100% AR

Calving Ease ★★ ★

GLACIER CHATEAU 744

RREDS BLUE PRINT H001

RREDS PRIMROSE F835

5L LEADING EDGE 15383-117C

B LAZY T LE H055 K021

B LAZY T DM 2002 H055

	Data	Ratio
Act BW	68	
Adj. WW	546	94
Adj. YW		
SC:		
Carcass	EPD	
Marb	0.27	
YG	0.06	
CW	22	
REA	0.29	
FAT	0.04	

	ProS	HB	GM	CED	BW	WW	YW	Milk	ME	HPG	CEM	Stay
EPDs	96	56	40	16	-4.5	58	90	26	-5	12	9	13

Heifer Bull! Stacking Blue Print on top of Leading Edge presents you with a calving ease, udder improver, female maker!

19

B LAZY T BP K009 M016

2/6/24

Reg#: 4921470

1A-100% AR

Calving Ease ★★ ★

GLACIER CHATEAU 744

RREDS BLUE PRINT H001

RREDS PRIMROSE F835

DVO ROYAL TOUCH D368

B LAZY T RT A005 K009

B LAZY T EPIC A005

	Data	Ratio
Act BW	60	
Adj. WW	566	97
Adj. YW		
SC:		
Carcass	EPD	
Marb	0.2	
YG	0	
CW	16	
REA	0.34	
FAT	0.03	

	ProS	HB	GM	CED	BW	WW	YW	Milk	ME	HPG	CEM	Stay
EPDs	96	66	29	15	-4.8	57	87	25	-8	12	9	15

Blue Print X Royal Touch, should make some amazing females. Heifer Bull

20

B LAZY T BP K017 M017

2/6/24

Reg#: 4921472

1A-100% AR

Calving Ease ★

GLACIER CHATEAU 744

RREDS BLUE PRINT H001

RREDS PRIMROSE F835

DVO ROYAL TOUCH D368

B LAZY T RT C037 K017

B LAZY T MISS AP C037

	Data	Ratio
Act BW	84	
Adj. WW	605	104
Adj. YW		
SC:		
Carcass	EPD	
Marb	0.19	
YG	-0.02	
CW	18	
REA	0.35	
FAT	0.02	

	ProS	HB	GM	CED	BW	WW	YW	Milk	ME	HPG	CEM	Stay
EPDs	88	62	26	13	-0.8	68	103	23	-6	11	7	15

Blue Print X Royal Touch. Moderate framed female maker

21

B LAZY T BP K001 M006

2/3/24

Reg#: 4921474

1A-100% AR

Calving Ease ★★ ★

GLACIER CHATEAU 744

RREDS BLUE PRINT H001

RREDS PRIMROSE F835

DVO ROYAL TOUCH D368

B LAZY T RT D005 K001

B LAZY T Y050 GR D005

	Data	Ratio
Act BW	72	
Adj. WW	560	96
Adj. YW		
SC:		
Carcass	EPD	
Marb	0.23	
YG	-0.04	
CW	11	
REA	0.37	
FAT	0.03	

	ProS	HB	GM	CED	BW	WW	YW	Milk	ME	HPG	CEM	Stay
EPDs	99	70	30	15	-3.7	55	84	25	-9	11	8	15

Heifer bull stacking the great female maker Blue Print on top of our very best cow family.



LOT 22'S DAM
B LAZY T MISS C005



B LAZY T BP C005 M033

2/16/24

Reg#: 5031129

1A-100% AR

Calving Ease ★★

GLACIER CHATEAU 744

RREDS BLUE PRINT H001

RREDS PRIMROSE F835

FEDDES BIG SKY R9

B LAZY T MISS BS C005

B LAZY T WILLIE A031

	Data	Ratio
Act BW	81	
Adj. WW	687	
Adj. YW		
SC:		
Carcass	EPD	
Marb	0.29	
YG	0	
CW	23	
REA	0.34	
FAT	0.02	

	ProS	HB	GM	CED	BW	WW	YW	Milk	ME	HPG	CEM	Stay
EPDs	95	57	38	13	-3	64	98	28	-1	11	6	15

Herd Bull! ET calf that demands attention. What a cool cross with Blue Print on a 10 year old Big Sky daughter that has a 106 MPPA and an average weaning ratio of 107. This guy has a very user friendly EPD profile. M033 has the looks and power to match his numbers and will leave you with an outstanding set of daughters!



B LAZY T SC D005 M007

2/4/24

Reg#: 4921406

1A-100% AR

Calving Ease ★

BIEBER ROLLIN DEEP Y118

RREDS SENECA 731C

RREDS ASTER 309A

RHRA GOLD RUSH 402 17T

B LAZY T Y050 GR D005

B LAZY T RANCH COW Y050

	Data	Ratio
Act BW	88	
Adj. WW	599	97
Adj. YW		
SC:		
Carcass	EPD	
Marb	0.27	
YG	0.07	
CW	19	
REA	0.32	
FAT	0.05	

	ProS	HB	GM	CED	BW	WW	YW	Milk	ME	HPG	CEM	Stay
EPDs	102	68	34	11	-1.1	64	102	26	-1	9	7	17

If you keep your own replacements this guy better be on your list. His dam, D005 has 7 calves with a 363 day calving interval. This is her first bull calf, all 6 of her heifers have been retained in the herd. His maternal grand dam, Y050 is a cow we have flushed, and at 14 years old she has a 101 MPPA. Maternal genetics at their best and then you through on Seneca to make this a very intriguing lot.

Located in Oelrichs, SD
Serving South Dakota

M&M CATTLE SERVICES

ULTRASOUND & A.I.



CALL, TEXT, OR EMAIL
FOR MORE INFORMATION

Megan Harkless

605.890.0959

mmcattleservices@gmail.com

- ✓ **GENEX REP**
- ✓ **SELECT Sires REP**
- ✓ **Ultrasound & A.I. cows**
- ✓ **Hydraulic Chute Rental**
- ✓ **DEALER**



LOT 24'S DAM - RAINBOW LARKABA 11J



B LAZY T MC 11J M019

2/7/24

Reg#: 5031131

1A-100% AR

Calving Ease ★

RED LWNBRG SLOWBURN 102H

RED RAINBOW METRIC 106K

RED RAINBOW DOLL 46B

S A V RAINFALL 6846

RAINBOW LARKABA 11J

RED RAINBOW LARKABA 37E

	Data	Ratio
Act BW	86	
Adj. WW	594	
Adj. YW		
SC:		
Carcass	EPD	
Marb	0.15	
YG	-0.08	
CW	32	
REA	0.47	
FAT	-0.01	

	ProS	HB	GM	CED	BW	WW	YW	Milk	ME	HPG	CEM	Stay
EPDs	55	11	44	9	1.5	80	131	25	5	10	5	9

Unique outcross genetics. Sired by the \$60,000 1/2 Interest Red Rainbow Metric crossed on an outstanding SAV Rainfall 6846 daughter. His Canadian EPD profile might not be impressive but his structure and power sure are. If you want a one of a kind in the country be sure to take a look here!



B LAZY T K070 8024 M021

2/8/24

Reg#: 4921422

1A-100% AR

Calving Ease ★★

RED SUNBERRY HEAD GAMES 361H

B LAZY T 361H C005 K070

B LAZY T MISS BS C005

BROWN JYJ REDEMPTION Y1334

TBLC MISS REDEMPTION 8024

TBLC MISS 605 CHEYENNE 990

	Data	Ratio
Act BW	68	
Adj. WW	597	95
Adj. YW		
SC:		
Carcass	EPD	
Marb	0.43	
YG	0.08	
CW	24	
REA	0.06	
FAT	0.02	

	ProS	HB	GM	CED	BW	WW	YW	Milk	ME	HPG	CEM	Stay
EPDs	105	58	47	13	-2.7	67	105	22	7	13	6	16

Good bull with a nice EPD profile. Dam is a medium framed massive middled cow. Low birth weight bull with lots of grow.



B LAZY T K070 H027 M056

3/9/24

Reg#: 4921458

1A-100% AR

Calving Ease ★

RED SUNBERRY HEAD GAMES 361H

B LAZY T 361H C005 K070

B LAZY T MISS BS C005

MUSHRUSH IMPACT Z352

B LAZY T IMPACT F013 H027

B LAZY T MISS 69B F013

	Data	Ratio
Act BW	96	
Adj. WW	648	104
Adj. YW		
SC:		
Carcass	EPD	
Marb	0.42	
YG	0.06	
CW	21	
REA	0.16	
FAT	0.02	

	ProS	HB	GM	CED	BW	WW	YW	Milk	ME	HPG	CEM	Stay
EPDs	109	65	44	9	1	75	117	24	6	16	3	17

Don't let the BW scare you, he will be fine on a set of cows, and boy are they gonna grow



B LAZY T H054 F018 M028

2/11/24

Reg#: 4921426

1A-100% AR

Calving Ease ★

PIE FRANCHISE 805

B LAZY T 805 D012 H054

B LAZY T Y065 176A D012

RHF-RHR 190A TENX 49D

B LAZY T MISS 49D F018

B LAZY T RANCH COW W072

	Data	Ratio
Act BW	86	
Adj. WW	599	97
Adj. YW		
SC:		
Carcass	EPD	
Marb	0.58	
YG	0.05	
CW	22	
REA	0.13	
FAT	0.01	

	ProS	HB	GM	CED	BW	WW	YW	Milk	ME	HPG	CEM	Stay
EPDs	117	49	68	10	0	68	118	27	5	12	6	15

Thick made powerful bull. Big bodied, good uddered cows on top and bottom. He will put thickness in your calves!



B LAZY T H054 H049 M060

3/16/24

Reg#: 4921456

1A-100% AR

Calving Ease ★★

PIE FRANCHISE 805

B LAZY T 805 D012 H054

B LAZY T Y065 176A D012

PIE FRANCHISE 805

B LAZY T 805 D005 H049

B LAZY T Y050 GR D005

	Data	Ratio
Act BW	74	
Adj. WW	674	109
Adj. YW		
SC:		
Carcass	EPD	
Marb	0.67	
YG	0.05	
CW	30	
REA	0.32	
FAT	0.02	

	ProS	HB	GM	CED	BW	WW	YW	Milk	ME	HPG	CEM	Stay
EPDs	149	68	80	13	-2.4	68	120	31	11	11	8	18

Long, thick bull with a good EPD spread. 74 lb BW on to a 674 lb adj ww. Dam is out of our best represented cow line.



B LAZY T OLE K028 M038

2/25/24

Reg#: 4921476

1A-100% AR

Calving Ease ★★

DUFF RED BLOOD 18114

RED OLE RED BLOOD 900J

RED OLE LANA 138F

DVO ROYAL TOUCH D368

B LAZY T RT 82C K028

RED BLAIR 'S QUEEN 82C

	Data	Ratio
Act BW	72	
Adj. WW	607	104
Adj. YW		
SC:		
Carcass	EPD	
Marb	0.29	
YG	-0.06	
CW	8	
REA	0.18	
FAT	0	

	ProS	HB	GM	CED	BW	WW	YW	Milk	ME	HPG	CEM	Stay
EPDs	76	54	22	14	-1.7	67	97	26	-4	13	5	14

This guy should sure work on a set of heifers. 72 lb BW and went on to ratio 104 at weaning. These Red Blood sons will be as easy fleshing as any we offer.



B LAZY T OLE K049 M049

3/1/24

Reg#: 4921496

1A-100% AR

Calving Ease ★★

DUFF RED BLOOD 18114

RED OLE RED BLOOD 900J

RED OLE LANA 138F

RED U2 CARETAKER 225G

BAG 225G H071 K049

B LAZY T 6044 A035 H071

	Data	Ratio
Act BW	69	
Adj. WW	603	104
Adj. YW		
SC:		
Carcass	EPD	
Marb	0.31	
YG	0.03	
CW	16	
REA	0.08	
FAT	0.01	

	ProS	HB	GM	CED	BW	WW	YW	Milk	ME	HPG	CEM	Stay
EPDs	88	61	27	15	-3.1	64	93	28	-4	14	6	15

Another premier heifer bull out of Ole. This guy will calve easy and give you a set of calves that will have some length and thickness.



GRILL RED RIVER 4151M

3/22/24

Reg#: 5066509

1A-100% AR

Calving Ease ★★

EGL GCC RED EAGLE E7194

NIO RED RIVER 1245

NIO MEG 8047

5L RIGHT SIGNAL 1901-19A

GRILL MS RIGHTFLASH 6932

GRILL MS GOLDFLASH 8W

	Data	Ratio
Act BW	88	
Adj. WW	665	100
Adj. YW		
SC:		
Carcass		EPD
Marb	0.3	
YG	0.02	
CW	22	
REA	0.18	
FAT	0.01	

	ProS	HB	GM	CED	BW	WW	YW	Milk	ME	HPG	CEM	Stay
EPDs	80	46	35	11	0	66	99	24	1	12	5	14

(Lot 31's ProS HB GM BW WW YW EPD'S ARE PARENTAL AVERAGES)

One of the first calves out of NIO Red River. Red River acquired from Niobrara Red Angus for his well put together dam, who displayed great feet and udder structure. Red River also impressed me with his sheer mass and muscle dimension while maintaining a moderate frame.



GRILL RED RIVER 4153M

3/27/24

Reg#: 5066513

1A-100% AR

Calving Ease ★★

EGL GCC RED EAGLE E7194

NIO RED RIVER 1245

NIO MEG 8047

5L RIGHT SIGNAL 1901-19A

GRILL MS ELEANOR 6953

GRILL MS 46Z

	Data	Ratio
Act BW	83	
Adj. WW	671	101
Adj. YW		
SC:		
Carcass		EPD
Marb	0.29	
YG	0.04	
CW	23	
REA	0.14	
FAT	0.01	

	ProS	HB	GM	CED	BW	WW	YW	Milk	ME	HPG	CEM	Stay
EPDs	72	40	33	11	-.1	66	98	24	1	12	5	13

(Lot 32's ProS HB GM BW WW YW EPD'S ARE PARENTAL AVERAGES)

This Red River son displays all the characteristics we were excited about when we found Red River. This young calf is very smooth, well put together yet going to be a very heavy muscled bull.



B LAZY T WW Y065 M062

3/19/24

Reg#: 5031125

1A-100% AR

Calving Ease ★

PELTON WIDELOAD 78B

LEM WORLDWIDE 1001 ET

LEM MS SENECA 902 ET

BUF CRK EXTRA DIMENSION U202

B LAZY T RANCH COW Y065

B LAZY T RANCH U047

	Data	Ratio
Act BW	82	
Adj. WW	637	
Adj. YW		
SC:		
Carcass		EPD
Marb	0.43	
YG	0.02	
CW	9	
REA	0.02	
FAT	0.01	

	ProS	HB	GM	CED	BW	WW	YW	Milk	ME	HPG	CEM	Stay
EPDs	88	48	40	12	-1.4	63	99	28	5	11	6	15

ET calf out of a 14 year old cow. He isn't going to be big framed but he is going to pack a punch, and longevity is bred in.



GRILL MEDAL 4155M

3/20/24

Reg#: 5066517

1A-100% AR

Calving Ease ★★

BUF CRK NICE'N EASY T189

REDHILL T189 MEDAL 176A

REDHILL 126T 287 182W

WEBR RURAL ROUTE 561

GRILL MS ZOEY 1001J

GRILL ZOEY 6935

	Data	Ratio
Act BW	75	
Adj. WW	689	104
Adj. YW		
SC:		
Carcass		EPD
Marb	0.47	
YG	0.17	
CW	16	
REA	-0.09	
FAT	0.04	

	ProS	HB	GM	CED	BW	WW	YW	Milk	ME	HPG	CEM	Stay
EPDs	119	75	44	12	-2.3	64	98	20	3	18	7	16

Low maintenance energy and super Herd builder potential. Maternal grandsire is Rural Route, used for good growth, but exceptional feet and udders. His daughters are proving his strength in these areas.



GRILL MEDAL 4152M

3/20/24

Reg#: 5066511

1A-100% AR

Calving Ease ★★

BUF CRK NICE'N EASY T189

REDHILL T189 MEDAL 176A

REDHILL 126T 287 182W

5L RIGHT SIGNAL 1901-19A

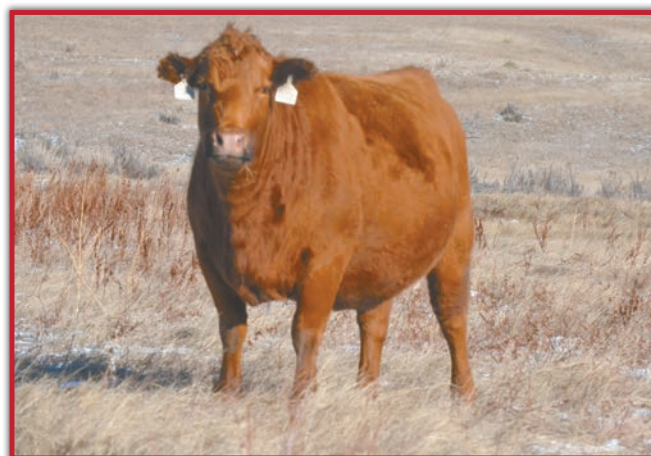
GRILL MS DEUCE 6942

GRILL MS DEUCE 8033

	Data	Ratio
Act BW	76	
Adj. WW	643	97
Adj. YW		
SC:		
Carcass	EPD	
Marb	0.47	
YG	0.19	
CW	19	
REA	-0.09	
FAT	0.05	

	ProS	HB	GM	CED	BW	WW	YW	Milk	ME	HPG	CEM	Stay
EPDs	126	79	47	12	-2.4	62	96	20	-2	19	7	15

A Medal son with great convenience trait stats. Calving ease and replacement females are a guarantee. Top 10% for Herd builder, -2.4 for BW, -2 Maintenance Energy.



LOT 35'S DAM - GRILL MS DEUCE 6942



GRILL MEDAL 4156M

3/23/24

Reg#: 5066519

1A-100% AR

Calving Ease ★★

BUF CRK NICE'N EASY T189

REDHILL T189 MEDAL 176A

REDHILL 126T 287 182W

WEBR RURAL ROUTE 561

GRILL MISSY 1045J

GRILL MISSY 6905

	Data	Ratio
Act BW	77	
Adj. WW	694	104
Adj. YW		
SC:		
Carcass	EPD	
Marb	0.48	
YG	0.2	
CW	15	
REA	-0.14	
FAT	0.05	

	ProS	HB	GM	CED	BW	WW	YW	Milk	ME	HPG	CEM	Stay
EPDs	122	80	42	12	-2.9	64	99	20	2	18	7	16

Medal X Rural Route combo that worked well for us. This calf cracked top 9% for Herd builder (build a herd around him) -2.9 BW and top 1% for Heifer Pregnancy. He has calving ease and female maker written all over his pedigree.



GRILL MEDAL 4154M

3/28/24

Reg#: 5066507

1A-100% AR

Calving Ease ★★

BUF CRK NICE'N EASY T189

REDHILL T189 MEDAL 176A

REDHILL 126T 287 182W

5L RIGHT SIGNAL 1901-19A

GRILL MS LANA 6993

GRILL MS LANA 1W

	Data	Ratio
Act BW	79	
Adj. WW	670	101
Adj. YW		
SC:		
Carcass	EPD	
Marb	0.46	
YG	0.16	
CW	16	
REA	-0.06	
FAT	0.04	

	ProS	HB	GM	CED	BW	WW	YW	Milk	ME	HPG	CEM	Stay
EPDs	134	89	45	13	-3	61	93	22	0	19	7	18

Sleep easy heifer bull with natural muscle. The cows behind him are the key. Maternal Grand dam produced more than one sale topper with one going to a commercial producer in Ft. Pierre for \$10,000 and another to Wyoming for \$8500.



GRILL MEDAL 4150M

4/10/24

Reg#: 5066515

1A-100% AR

Calving Ease ★★

BUF CRK NICE'N EASY T189

REDHILL T189 MEDAL 176A

REDHILL 126T 287 182W

5L RIGHT SIGNAL 1901-19A

GRILL BREE 6930

GRILL BREE 3014A

	Data	Ratio
Act BW	75	
Adj. WW	625	94
Adj. YW		
SC:		
Carcass	EPD	
Marb	0.46	
YG	0.19	
CW	20	
REA	-0.07	
FAT	0.05	

	ProS	HB	GM	CED	BW	WW	YW	Milk	ME	HPG	CEM	Stay
EPDs	134	86	48	12	-2.4	66	102	20	2	19	7	17

This Medal son stacks calving ease on both sides of the pedigree. His Maternal Granddam has been a standout donor for Grill Cattle Co. His highlights include low BW, great herd builder potential, low maintenance energy and females that will stay in the herd.

15 Commercial Replacement Heifers



Heifers have had their calf hood, weaning vaccinations and bangs vaccinations. They have also been poured with CleanUp II. They will weigh between 850-900# sale day.



2 YEAR OLD PAIR BOTH SIRED BY RED WESTERN GENETICS. THIS CUSTOMER'S CALVES AVERAGED 63% OF THEIR DAM'S WEIGHT AT WEANING.



Red Western Genetics at work for our customers!



**JOHN & BILL TANNER CATTLE THRIVING IN TOUGH CONDITIONS.
20 YEARS DEEP INTO RED WESTERN GENETICS!**

RED WESTERN CUSTOMER REPLACEMENT HEIFERS WINTERING ON LOW INPUTS. THIS SET OF HEIFERS HAD A 95% PREGNANCY RATE.

NOTES



CHEYENNE RIVER ANIMAL HOSPITAL



202 10TH AVE
PO BOX 536
EDGEMONT, SD 57735

PHONE 605-662-7838
FAX 605-662-7839



Call Us For Your Heavy Construction,
Trucking and Concrete Needs!

605-662-7760 bconcrete@gwtc.net



Your local source for Everything for Ranchers but Rain

CUSTOM FEED MIXES, BAGGED & BULK FEED, SALT, MINERAL, LIVESTOCK
EQUIPMENT & SUPPLIES, SDR-11 PIPE, FENCING SUPPLIES, PLUMBING, PAINT



305 1ST AVENUE, EDMONT, SOUTH DAKOTA
PHONE: 605-662-7223 WWW.RANCHERSFEEDINC.COM



MARTIN-TRUDEAU INSURANCE **LIVESTOCK** DIVISION

LIVESTOCK:

- Mortality
- ASD Infertility
- Packers & Stockyards
(Mortgage & Stolen Cattle)
- Feed Yards

EQUINE:

- Mortality
- Major Medical/Surgical Options
- Private Horse Owner's
Liability Endorsement

Frozen Semen & Embryo/Storage & Transit

**We proudly represent
the following companies:**

Stockmen's Insurance, Nationwide, Chubb Agribusiness,
The Hartford, Grinnell Mutual, Berkley Equine & Cattle



Livestock Insurance endorsed by the South Dakota Angus, Simmental & Hereford Associations



1531 W Elm Ave • P.O. Box 487 • Mitchell, SD 57301
605-996-3106 • 1-800-450-3106

WWW.MARTIN-TRUDEAUIINSURANCE.COM



L to R: Chris Nelson, Randa Dean, Kristen Velez, Amy Bussmus-Puepke,
Ray Trudeau, Colton Tobin, Katie Williams, Eric Audiss

PROFIT. REPEAT.

Generate repeated profits with the industry's most-favored female.

Independent research from a decade of data collection showed Red Angus-sired heifers commanded \$66/head more than females of other breed types. That's nearly \$5,300 on a single load of replacement heifers to boost profits on your operation.

Visit **RedAngus.org** for details on the industry's most-favored female.



RED ANGUS
RANCH TESTED. RANCHER TRUSTED.

Red Angus Guide to EPDS and Indexes

ProS... Profitability and Sustainability is an all-purpose index that predicts average economic differences in all segments in the beef supply chain. This index is a combination of the breeding objectives modeled in the HerdBuilder and GridMaster selection indexes. In this index, replacement heifers are retained from within the herd and all remaining progeny are fed out to slaughter and sold on a quality-based grid. Traits included in this index include calving ease, growth, HPG, STAY, Mature Weight, Dry Matter Intake and carcass traits. The resulting index is expressed in dollars per head born (Index/High Value).

HB HerdBuilder is a maternal selection index that predicts the economic differences of animals for traits that are important from conception through weaning. Expressed as dollars per head born, HB is calculated based on the scenario that bulls are mated to heifers and cows, replacement heifers are retained and all remaining progeny are marketed at weaning. Traits included in the HB index include Calving Ease Direct, Calving Ease Maternal, Weaning Weight, Milk, Mature Weight, Heifer Pregnancy and Stayability (Index/High Value).

GM..... GridMaster is a selection index that predicts the average economic difference of non-replacement calves through the post-weaning phase of production. GM places selection pressure on growth, feedyard performance and carcass traits. Expressed as dollars per head born, GM is calculated based on the scenario that progeny are fed out to slaughter and marketed on a quality-based carcass grid. Traits included in GM include Average Daily Gain, Carcass Weight, Dry Matter Intake, Marbling, Back Fat and Rib Eye Area (Index/High Value).

CED Calving Ease Direct predicts differences in the percent of calves born unassisted out of 2-year-old dams. (Percent/High Value)

BW Birth Weight predicts differences in actual birth weight of progeny. (Pounds/Low Value)

WW Weaning Weight predicts differences in 205-day weaning weight. (Pounds/High Value)

YW Yearling Weight predicts differences in 365-day yearling weight. (Pounds/High Value)

ADG Average Daily Gain predicts differences in weight gain between 205 and 365 days of age. (Pounds/High Value)

DMI Dry Matter Intake predicts differences in daily feed intake as measured in a feedlot during the post-weaning period. (Pounds/Low Value)

MILK Milk predicts differences in weaning weight attributed to the milking ability of the animal's daughters. (Pounds/High Value)

ME Maintenance Energy predicts the difference in maintenance energy requirements. (Mcal per Month/Low Value)

HPG Heifer Pregnancy predicts differences in the percent of daughters who are able to conceive and calve at 2 years of age following exposure to breeding. (Percent/High Value)

CEM Calving Ease Maternal predicts differences in the percent of daughters who are able to calve unassisted as 2-year-old heifers. (Percent/High Value)

STAY Stayability predicts differences in the ability of an animal's retained daughters to remain productive in the herd – calve every year – through 6 years of age. (Percent/High Value)

MARB Marbling predicts differences in marbling score – amount of intramuscular fat measured at the 13th rib. (Marbling Score Units/High Value)

YG Yield Grade predicts differences in USDA Yield Grade, which is calculated using CW, REA and Fat. (Yield Grade Units/Low Value)

CW Carcass Weight predicts differences in actual hot carcass weight. (Pounds/High Value)

REA Ribeye Area predicts differences in square inches of ribeye area measured at the 13th rib. (Square Inches/High Value)

FAT Fat predicts differences in the depth of backfat measured between the 12th and 13th ribs. (Inches/Low Value)

RED ANGUS
RANCH TESTED. RANCHER TRUSTED.
RedAngus.org



Grill Cattle Co.

Jeff & Diana Grill
40275 257th St
Mitchell SD 57301
605-890-1477 (C)
gcc@gwtc.net

www.grillcattlecompany.com

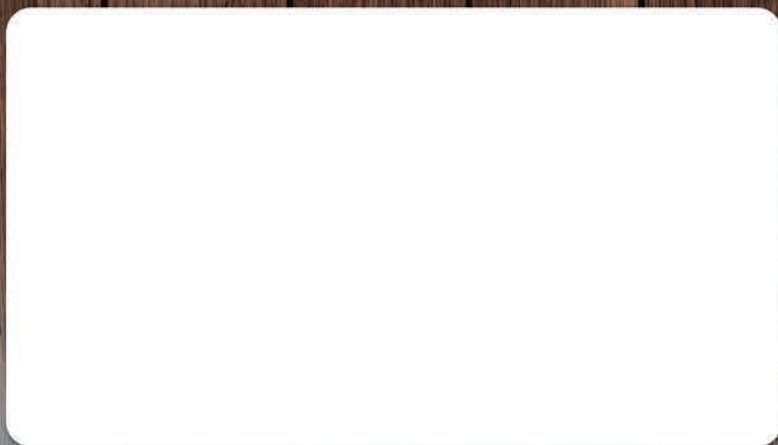
B Lazy T Ranch

Brad & Trixie Grill
605-673-5518 (H)
605-891-3041 (C)
btranch@gwtc.net
www.blazytranch.com

Grills 21st Annual

RED WESTERN
Red Angus Bull Sale

FRIDAY, APRIL 18, 2025
12:00 PM MT
Crawford Livestock • Crawford, NE



Happy Trails!